


THE BASE BID WORK IS HAZARDOUS MATERIALS PROCEDURES, ASBESTOS DEMOLITION, AND TEMPORARY REMEDIAL REPAIRS.  
ALTERNATE I: BUILDING DEMOLITION IS OMITTING THE TEMPORARY REMEDIAL REPAIRS, BUILDING DEMOLITION, AND SITE WORK.



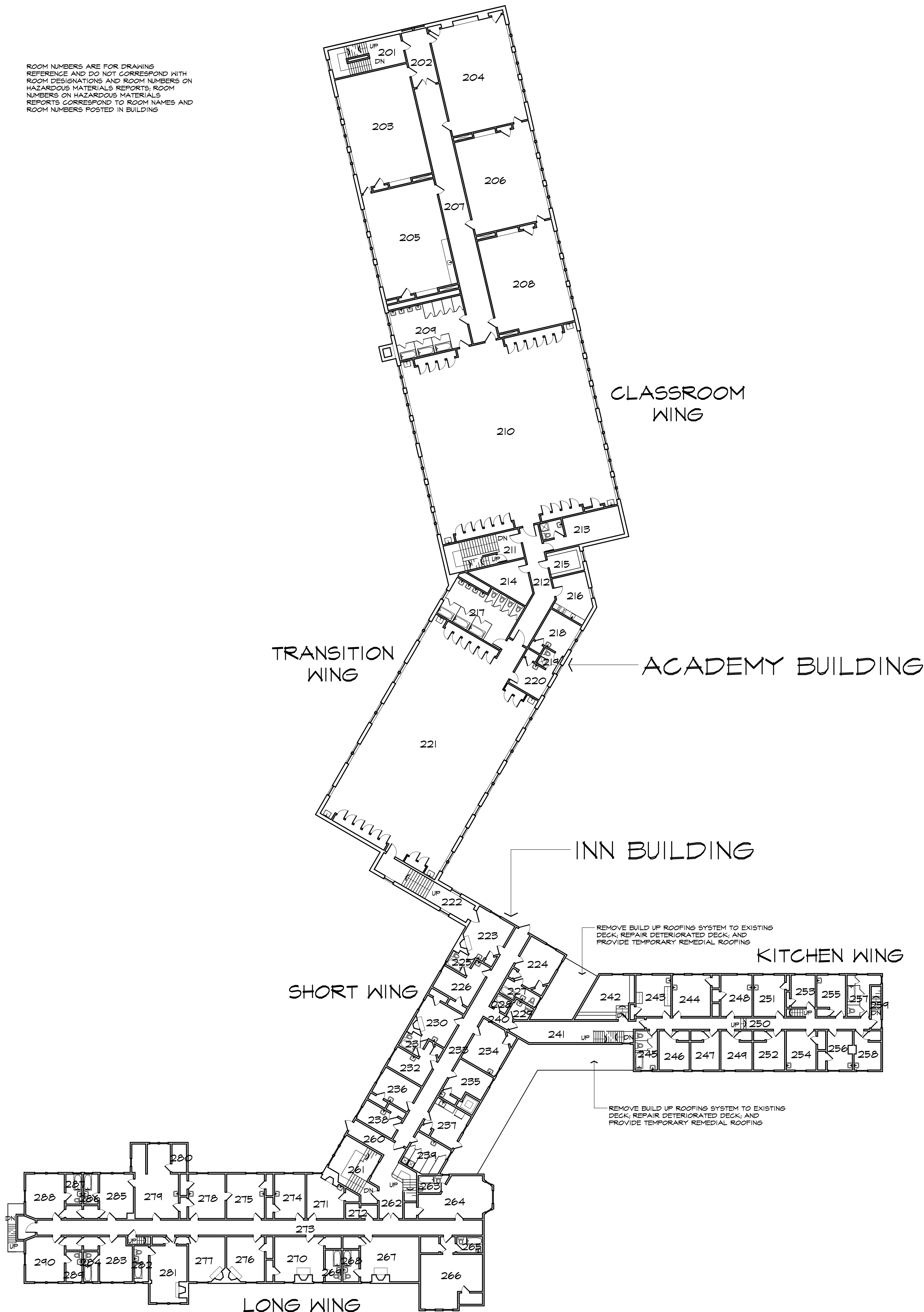
REMOVE EXTERIOR AREAWAYS AND STAIRS TO AT  
LEAST 5 FEET BELOW GRADE

$1/16" = 1'-0"$



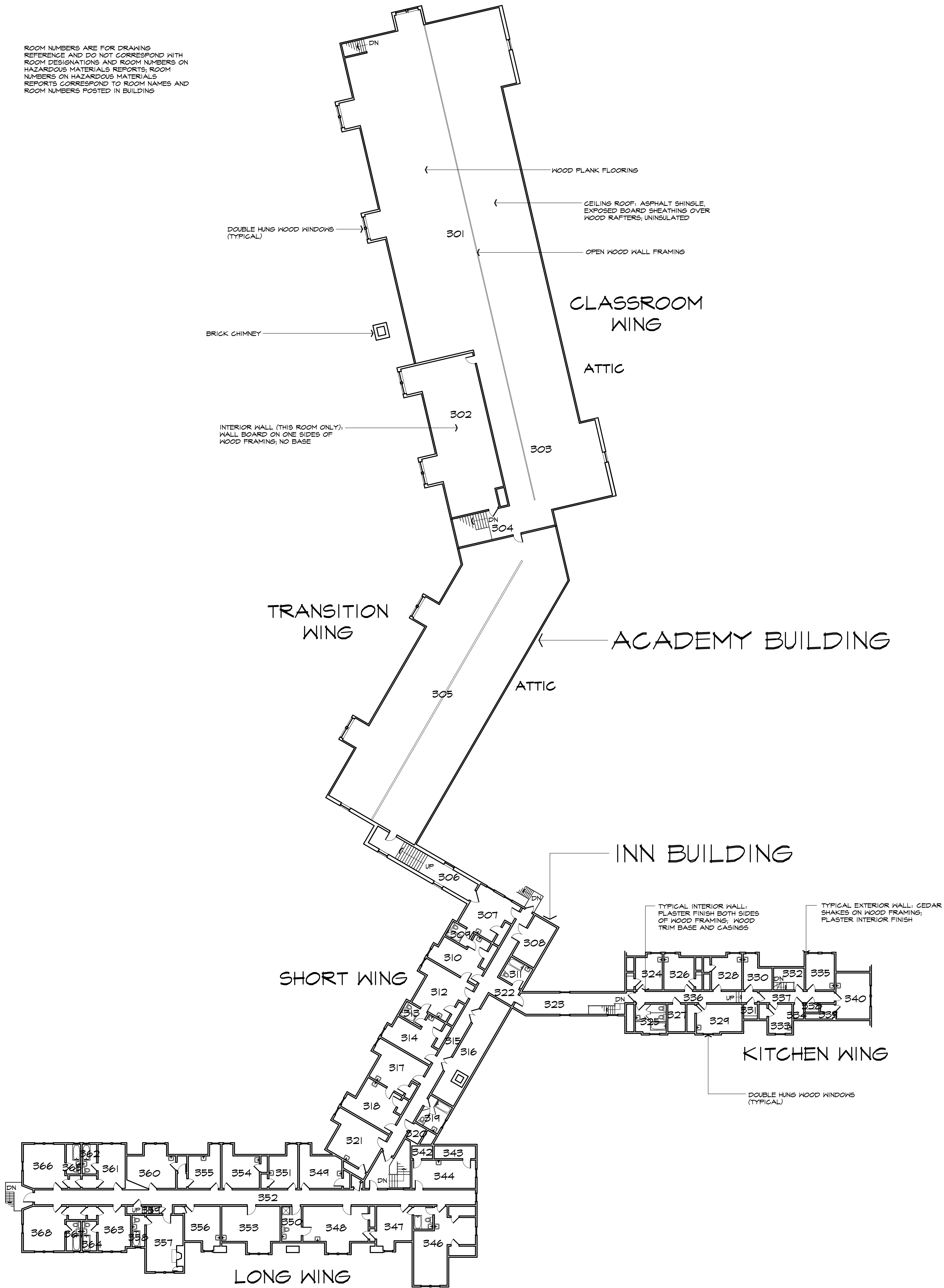
THE BASE BID WORK IS HAZARDOUS MATERIALS PROCEDURES, ASBESTOS DEMOLITION, AND TEMPORARY REMEDIAL REPAIRS. ALTERNATE 1: BUILDING DEMOLITION IS OMITTING THE TEMPORARY REMEDIAL REPAIRS, BUILDING DEMOLITION, AND SITE WORK.

ROOM NUMBERS ARE FOR DRAWING  
REFERENCE AND DO NOT CORRESPOND WITH  
ROOM DESIGNATIONS AND ROOM NUMBERS ON  
HAZARDOUS MATERIALS REPORTS; ROOM  
NUMBERS ON HAZARDOUS MATERIALS  
REPORTS CORRESPOND TO ROOM NAMES AND  
ROOM NUMBERS POSTED IN BUILDING



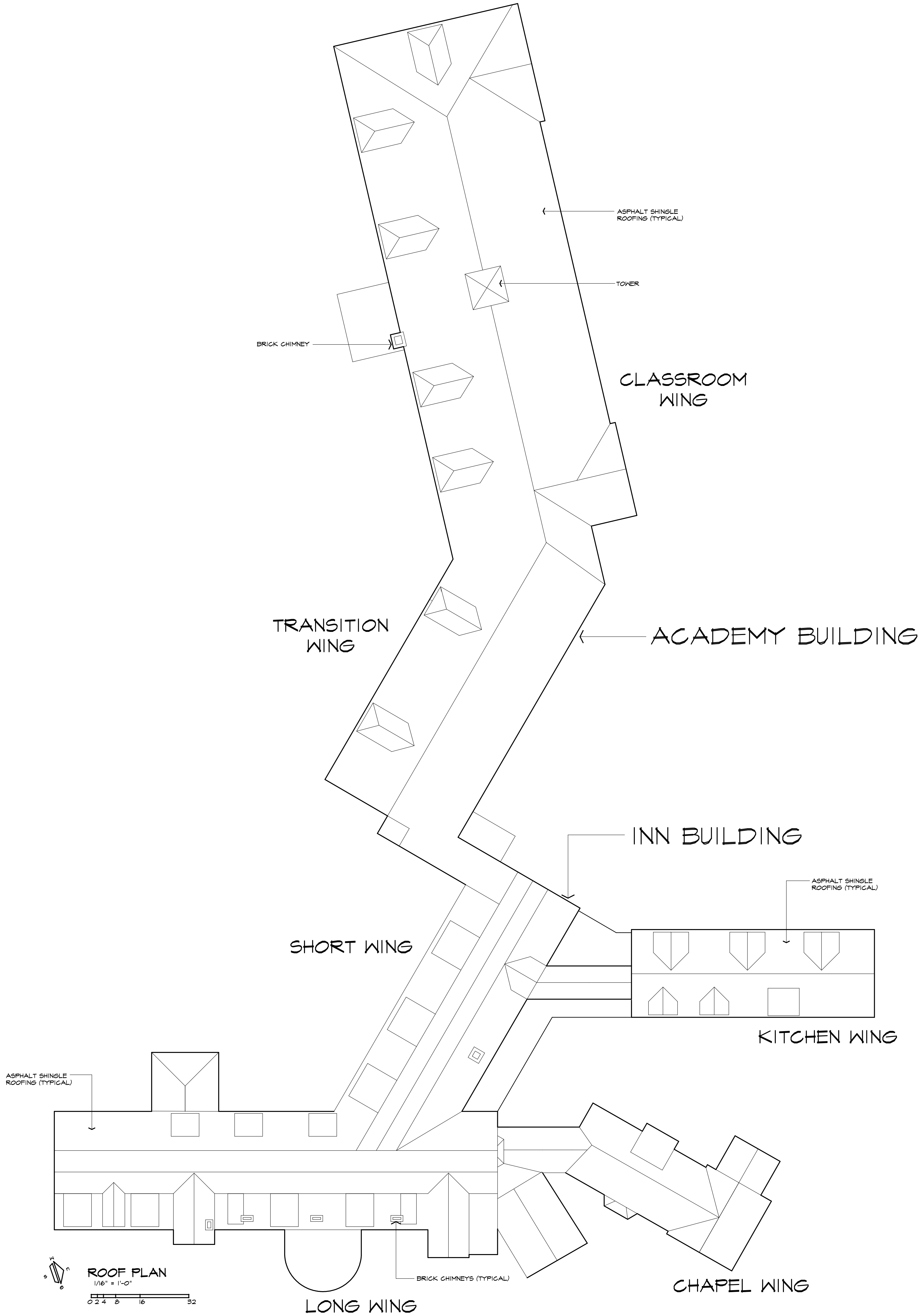
FLOOR PLAN: SECOND FLOOR  
1/16" = 1'-0"



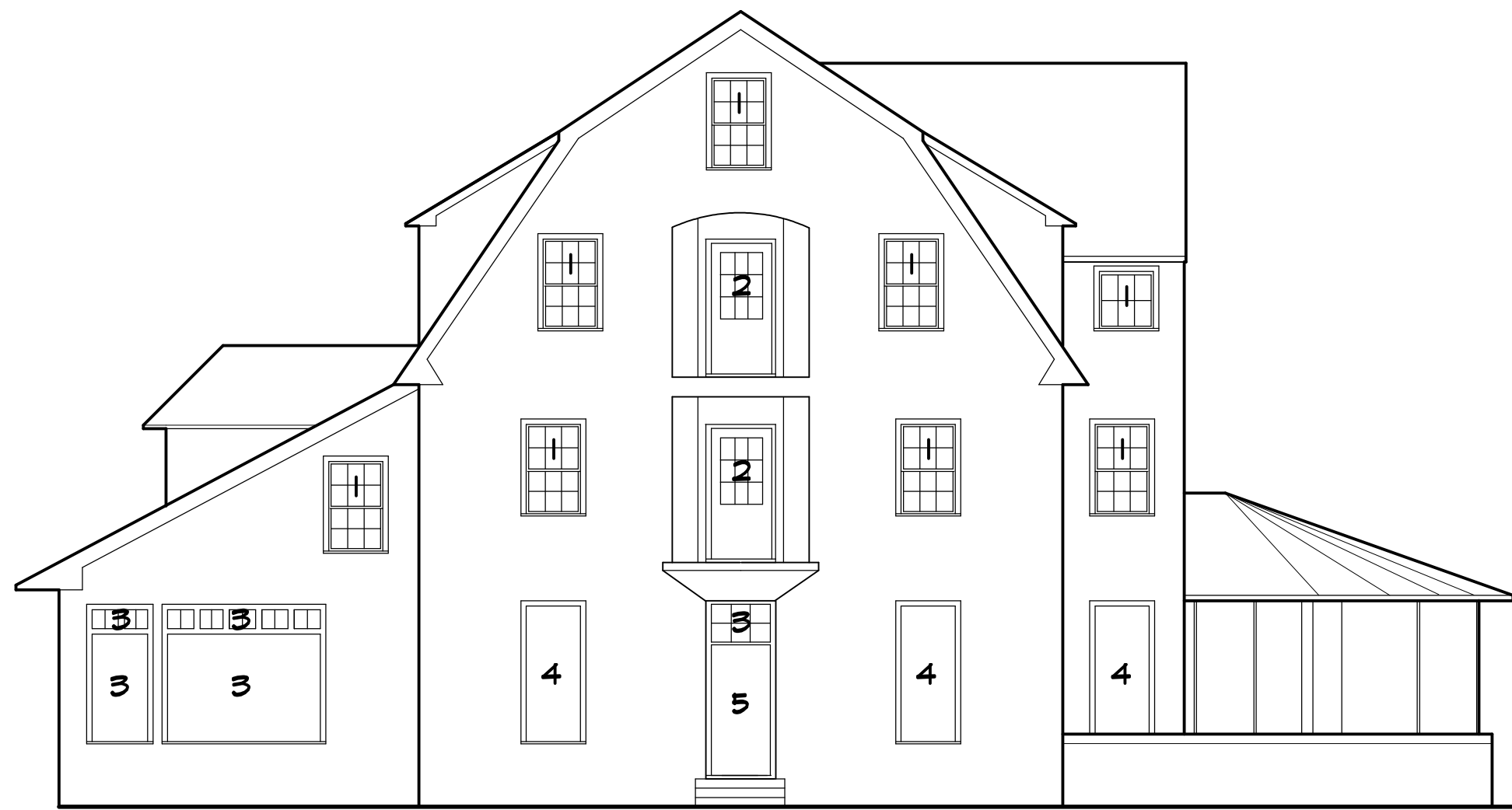


FLOOR PLAN: THIRD FLOOR  
1/16" = 1'-0"

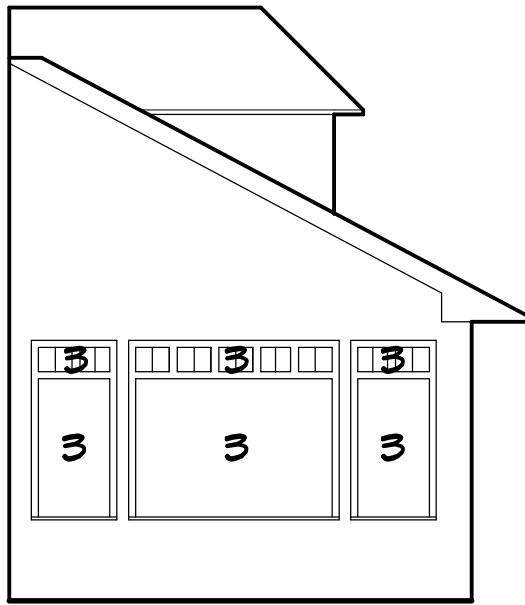
THE BASE BID WORK IS HAZARDOUS MATERIALS PROCEDURES, ASBESTOS DEMOLITION, AND TEMPORARY REMEDIAL REPAIRS.  
ALTERNATE I: BUILDING DEMOLITION IS OMITTING THE TEMPORARY REMEDIAL REPAIRS, BUILDING DEMOLITION, AND SITE WORK.



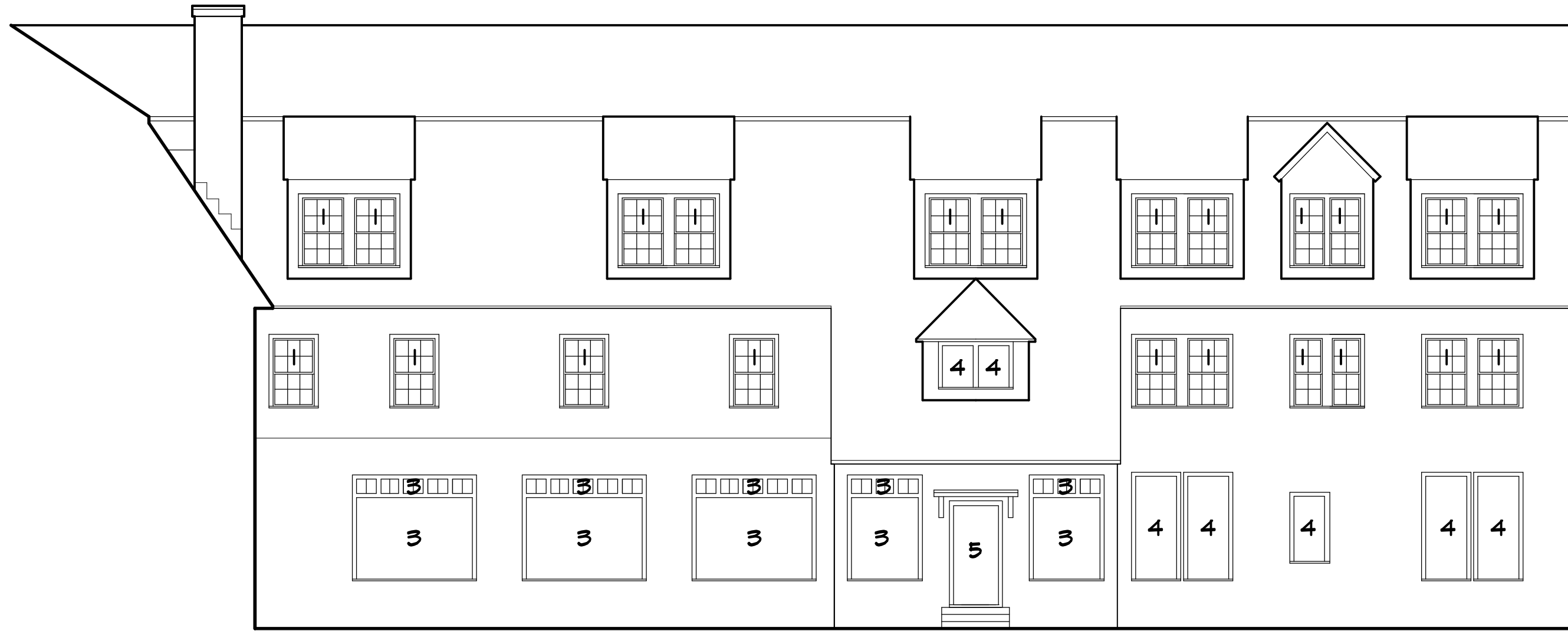
THE BASE BID WORK IS HAZARDOUS MATERIALS PROCEDURES, ASBESTOS DEMOLITION, AND TEMPORARY REMEDIAL REPAIRS.  
ALTERNATE I: BUILDING DEMOLITION IS OMITTING THE TEMPORARY REMEDIAL REPAIRS, BUILDING DEMOLITION, AND SITE WORK.



LONG WING



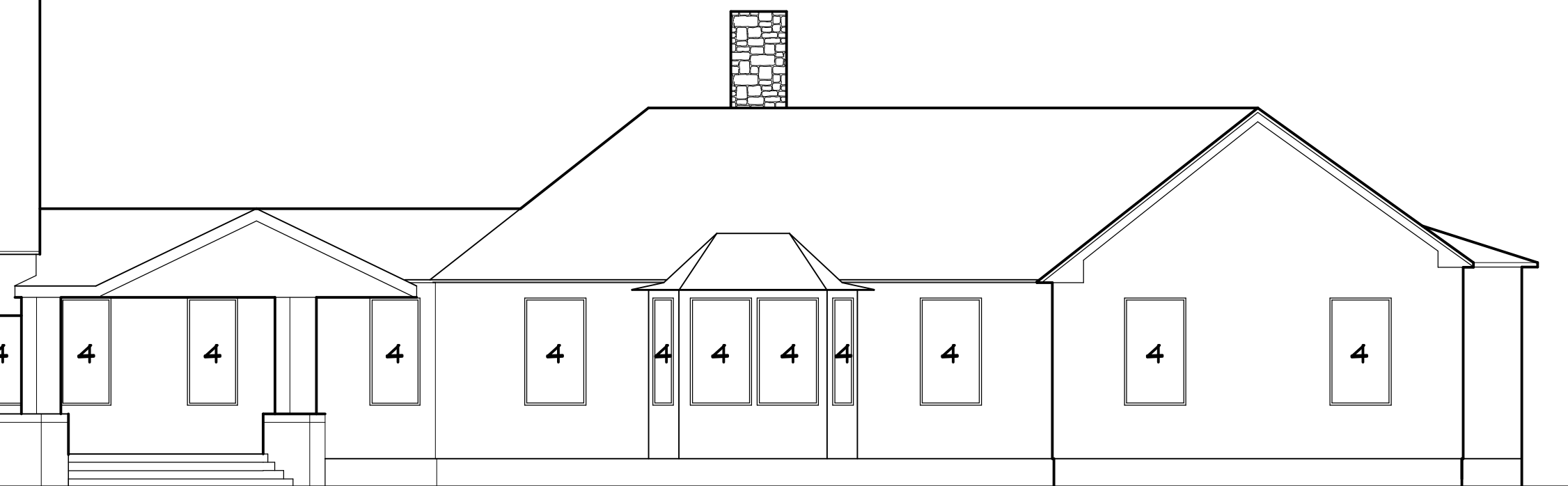
LONG WING



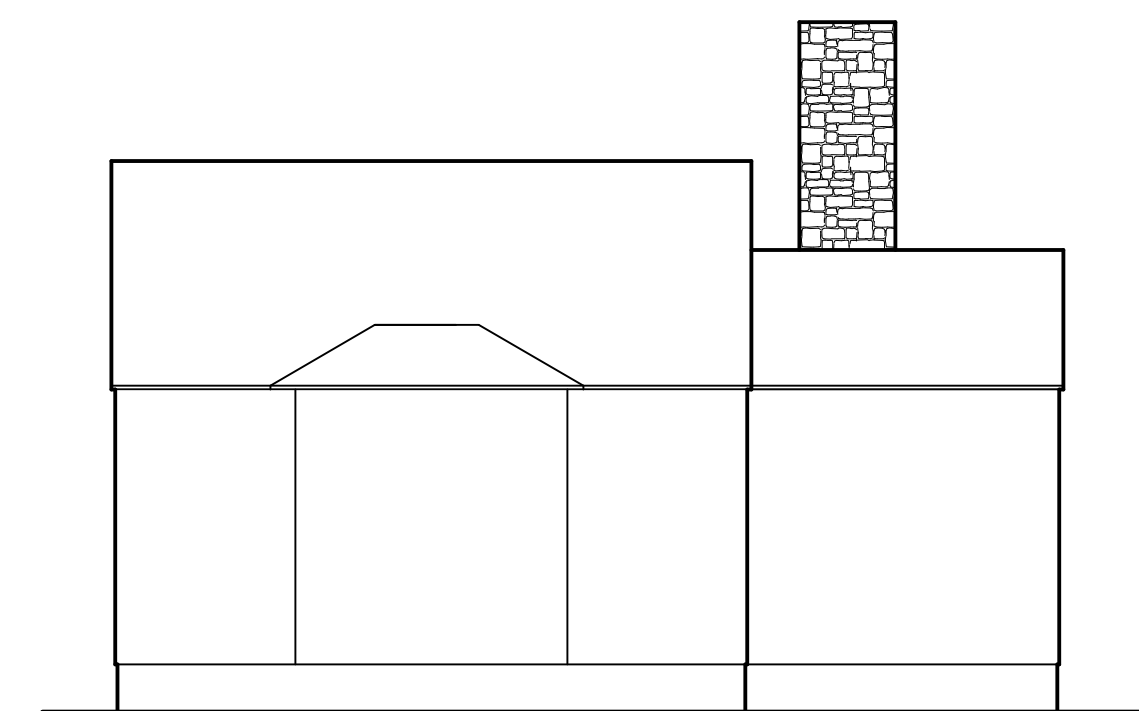
LONG WING



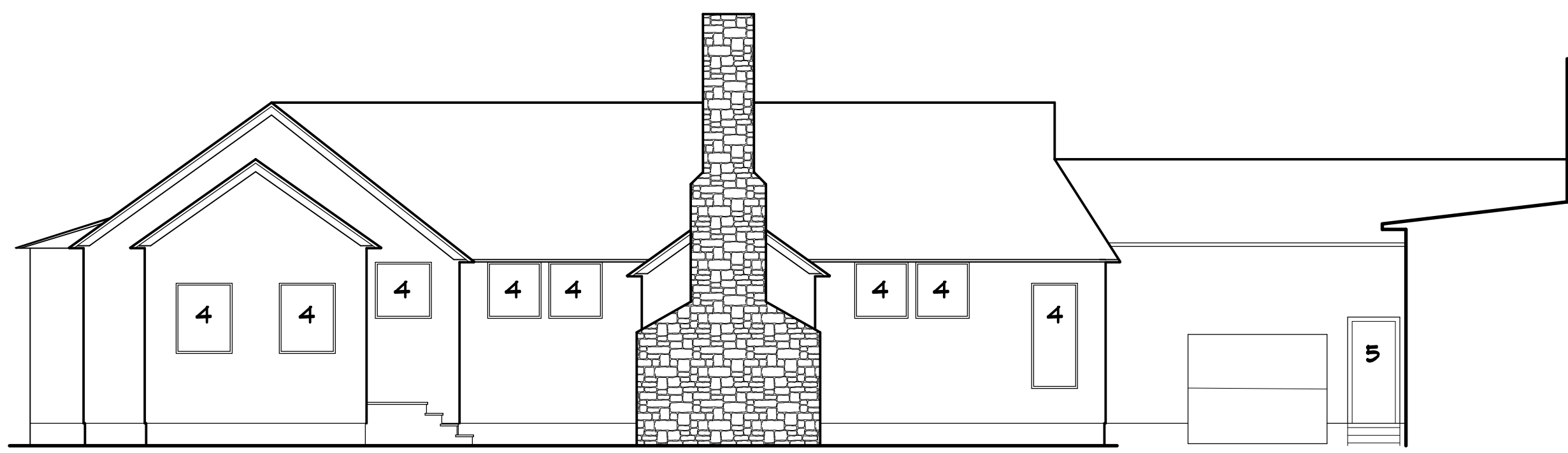
LONG WING



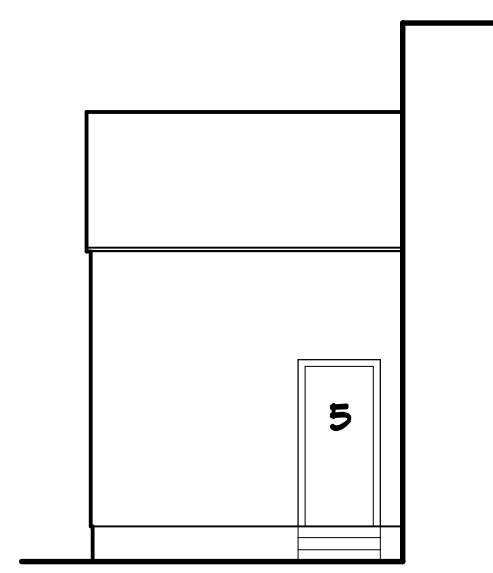
CHAPEL WING



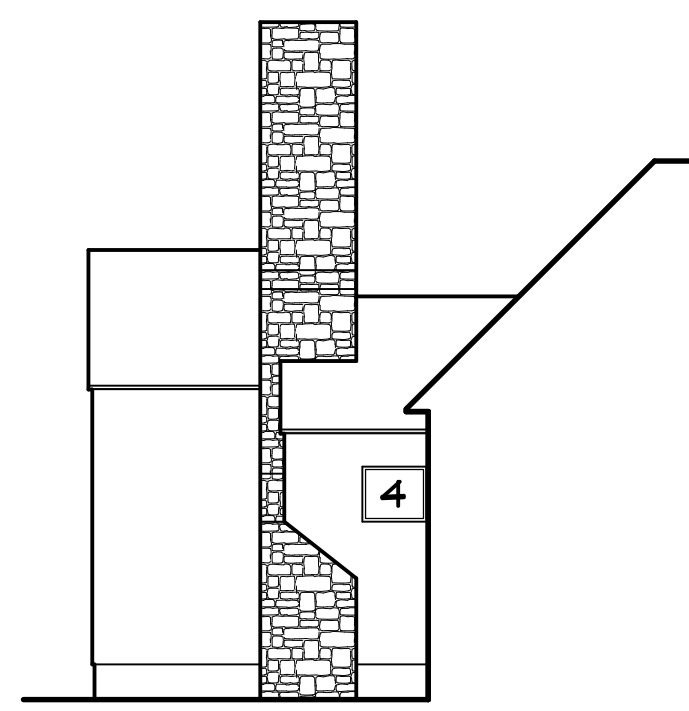
CHAPEL WING



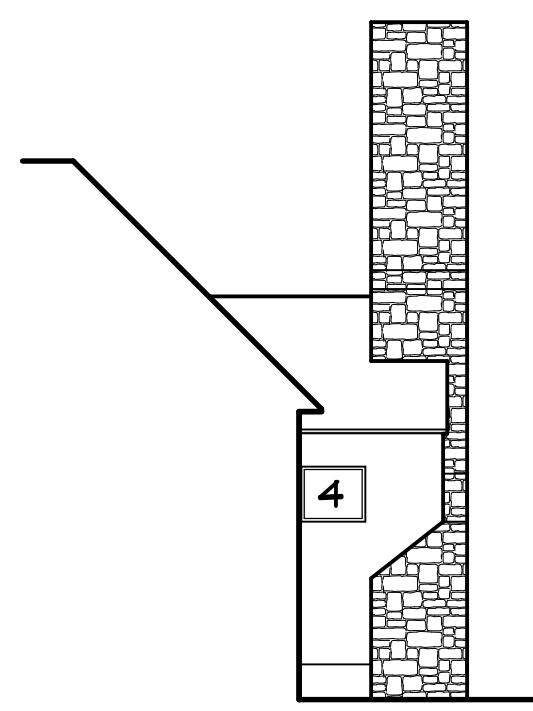
CHAPEL WING



CHAPEL WING



CHAPEL WING

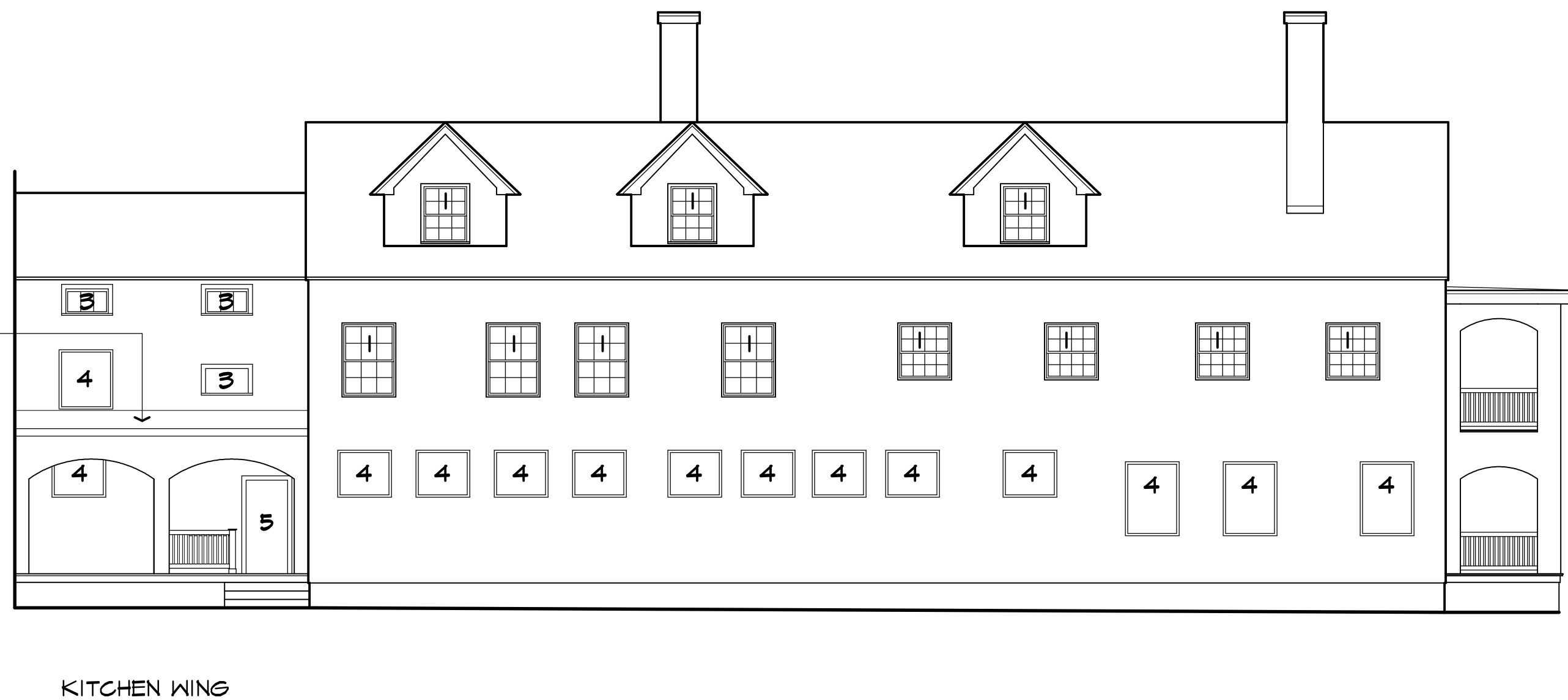
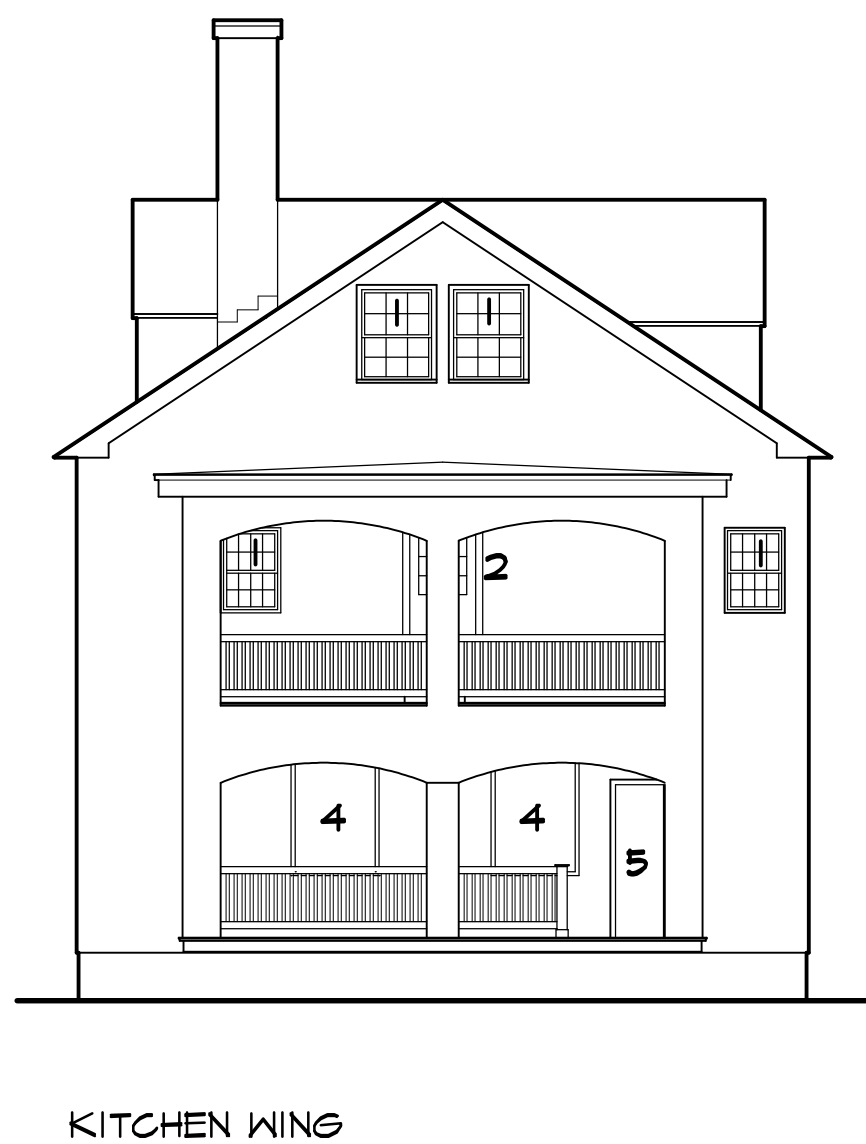
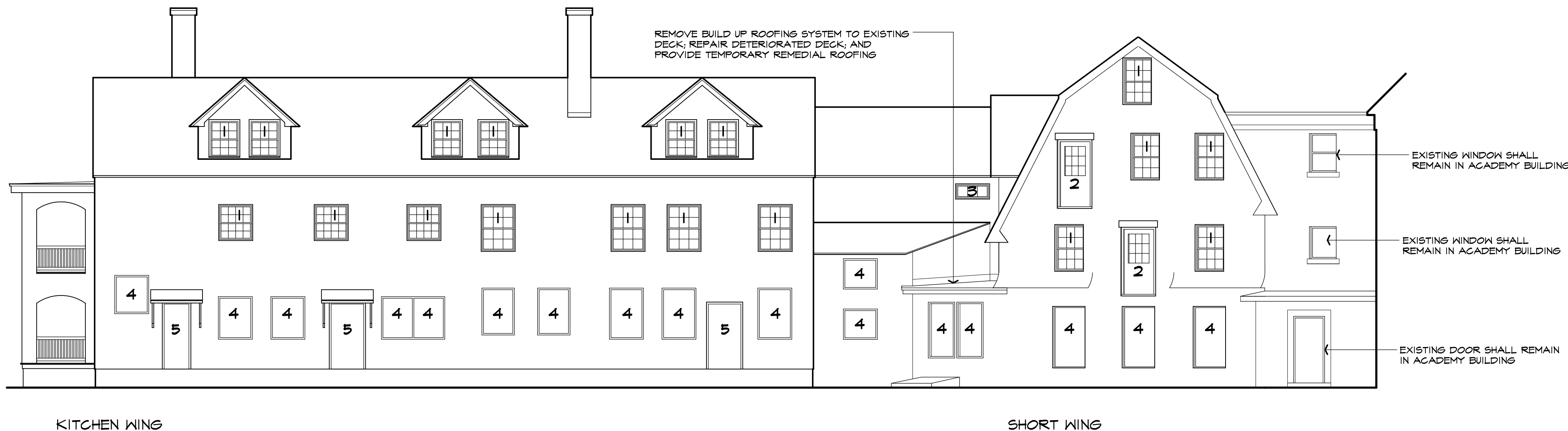
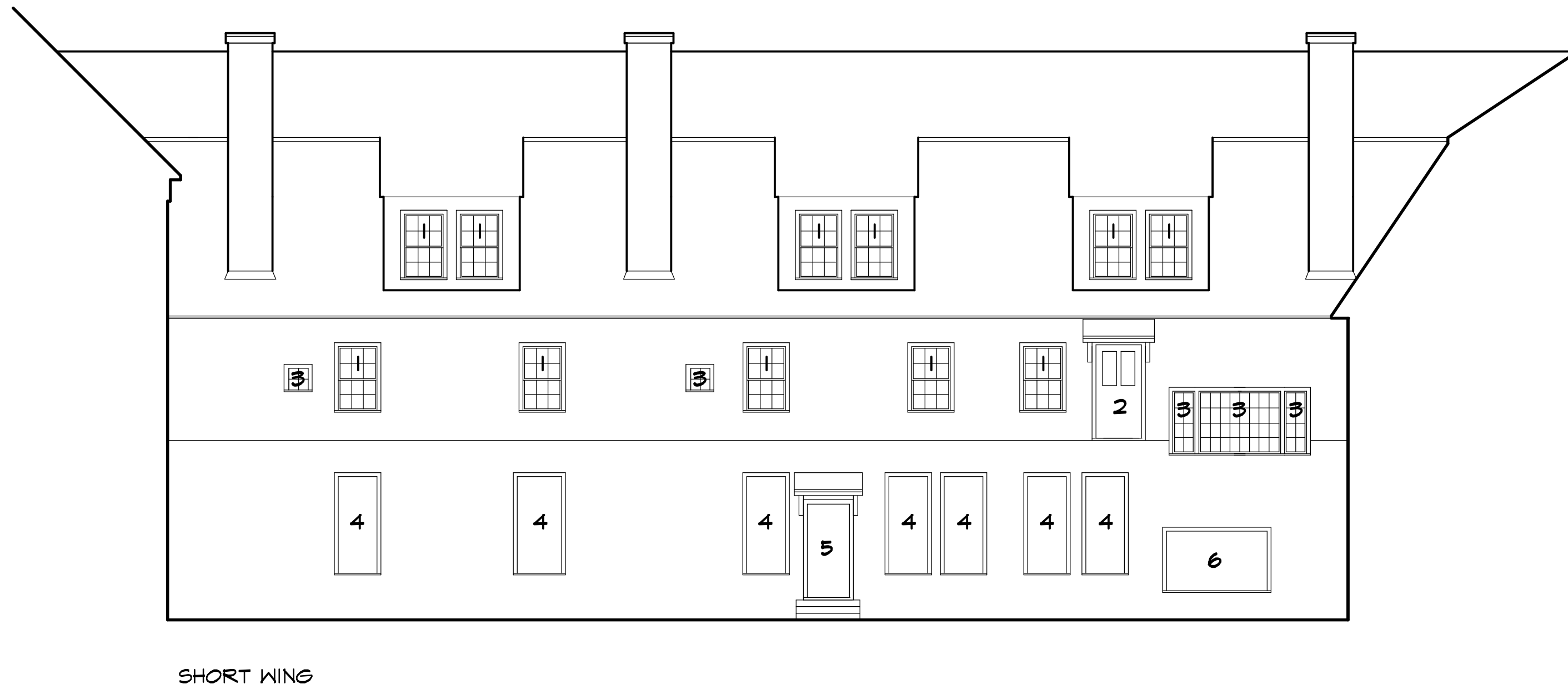
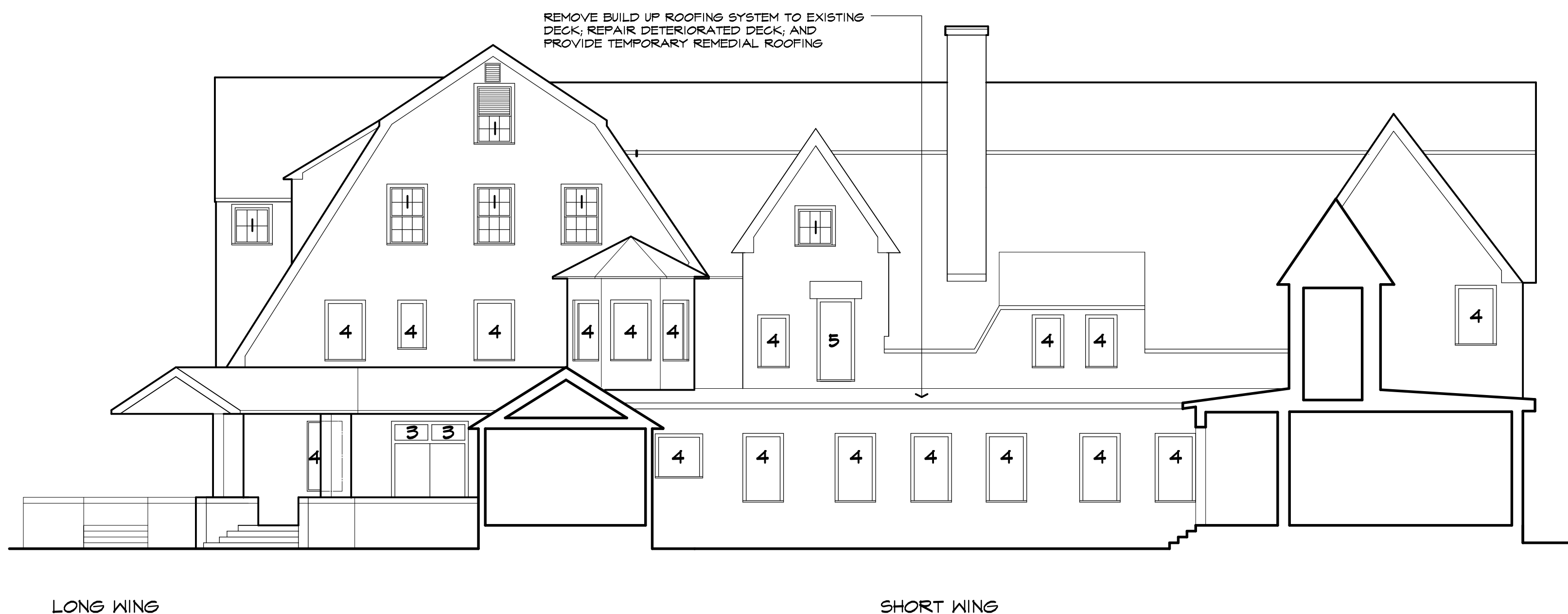


CHAPEL WING

EXTERIOR ELEVATIONS

1/8" = 1'-0"

- 1 REMOVE SASH FROM DOUBLE HUNG WINDOWS AND PROVIDE TEMPORARY REMEDIAL REPAIRS AT WINDOW OPENING
- 2 REMOVE WINDOW GLAZE FROM FIXED GLASS IN DOOR AND PROVIDE TEMPORARY PLYWOOD PROTECTION THAT COVERS OPENING
- 3 REMOVE WINDOW GLAZE FROM FIXED GLASS IN WINDOW, PROVIDE TEMPORARY PLYWOOD PROTECTION THAT COVERS SMALL OPENINGS AND TEMPORARY REMEDIAL REPAIRS AT LARGE WINDOW OPENINGS
- 4 REMOVE EXISTING PLYWOOD PROTECTION, REMOVE SASH FROM DOUBLE HUNG WINDOW, AND PROVIDE TEMPORARY REMEDIAL REPAIRS AT WINDOW OPENING
- 5 REMOVE EXISTING PLYWOOD PROTECTION, REMOVE WINDOW GLAZE FROM FIXED GLASS IN DOOR AND PROVIDE TEMPORARY PLYWOOD PROTECTION THAT COVERS OPENING



EXTERIOR ELEVATIONS

1/8" = 1'-0"

- 1 REMOVE SASH FROM DOUBLE HUNG WINDOWS AND PROVIDE TEMPORARY REMEDIAL REPAIRS AT WINDOW OPENING
- 2 REMOVE WINDOW GLAZE FROM FIXED GLASS IN DOOR AND PROVIDE TEMPORARY FLYWOOD PROTECTION THAT COVERS OPENING
- 3 REMOVE WINDOW GLAZE FROM FIXED GLASS IN WINDOW, PROVIDE TEMPORARY FLYWOOD PROTECTION THAT COVERS SMALL OPENINGS AND TEMPORARY REMEDIAL REPAIRS AT LARGE WINDOW OPENINGS
- 4 REMOVE EXISTING FLYWOOD PROTECTION, REMOVE SASH FROM DOUBLE HUNG WINDOW, AND PROVIDE TEMPORARY REMEDIAL REPAIRS AT WINDOW OPENING
- 5 REMOVE EXISTING FLYWOOD PROTECTION, REMOVE WINDOW GLAZE FROM FIXED GLASS IN DOOR AND PROVIDE TEMPORARY FLYWOOD PROTECTION THAT COVERS OPENING
- 6 REMOVE EXISTING FLYWOOD PROTECTION, REMOVE WINDOW GLAZE FROM FIXED GLASS IN WINDOW AND PROVIDE TEMPORARY FLYWOOD PROTECTION THAT COVERS OPENING